

Elastic Registration of MR-Images Based on a Biomechanical Model of the Human Head

A. Hagemann¹, K. Rohr¹, H. S. Stiehl¹, U. Spetzger², J. M. Gilsbach²

¹Universität Hamburg, FB Informatik, AB Kognitive Systeme,
Vogt-Kölln-Straße 30, 22527 Hamburg, Germany
Tel.: +49 (40) 5494 2577 Fax: +49 (40) 5494 2572
E-Mail: hagemann@informatik.uni-hamburg.de

²Neurochirurgische Klinik, Universitätsklinik der Rheinisch-Westfälischen
Technischen Hochschule (RWTH),
Pauwelstraße 30, D-52057 Aachen, Germany

Abstract. The accuracy of image-guided neurosurgery generally suffers from brain deformations due to intraoperative changes, e.g. brain shift or tumor resection. In order to improve the accuracy, we developed a biomechanical model of the human head which can be employed for the correction of preoperative images. By now, the model comprises two different materials and the correction of the preoperative image is driven by a set of given image correspondences. Our approach has been tested on synthetic images and yields physically plausible results. Additionally, we carried out registration experiments with a preoperative MR image and a corresponding postoperative image. We found, that our approach yields good prediction results, even in the case when correspondences are given in a small area of the image only.

1 Introduction

The accuracy of image-guided surgery generally suffers from brain deformations due to intraoperative changes like brain shift or tumor resection. To improve upon navigation accuracy, we developed a biomechanical model of the human head which allows to predict intraoperative brain deformations and thus to correct the preoperative image w.r.t. surgery-induced effects. Our approach is based on the well-established physical theory of *continuum mechanics* and uses the *finite element method* (FEM) for discretization, which results in a large linear matrix system. Instead of using forces, which are generally difficult to determine from images, we use a set of given correspondences to drive the adaption of the preoperative image. Different materials were incorporated by spatially varying the material parameters according to the underlying anatomical structure. Prior to our registration experiments with clinical 2D pre- and postoperative tomographic images, we carried out experiments with synthetic 2D images in order to assess the physical plausibility of the deformations predicted by our model.

Previous work on intraoperative image correction, which also addressed incorporation of different material properties are based on mass-spring systems [1], a combination of different energy terms [2], or a thin-plate spline approach

[3]. However, in comparison to our approach, these physically motivated models incorporate no real physical material parameters and hence are only weakly related to the real physical behaviour of biological soft tissue.

2 Approach

Our biomechanical model is based on the *equations of motion* which describe the deformation of a body Ω under externally applied forces. The material properties of Ω are incorporated by substituting the corresponding *constitutive equation*, which describes the stress/strain relationship of the body, into the equations of motion. Assuming linear elastic materials, i.e. using *Hooke's law* as underlying constitutive equation, we yield a set of coupled differential equations:

$$\begin{cases} -\text{div}[\lambda(\text{tr } \mathbf{e}(\mathbf{u}))\mathbf{I} + 2\mu\mathbf{e}(\mathbf{u})] = \mathbf{f} & \text{in } \Omega \\ (\lambda(\text{tr } \mathbf{e}(\mathbf{u}))\mathbf{I} + 2\mu\mathbf{e}(\mathbf{u}))\mathbf{n} = \mathbf{g} & \text{on } \Gamma. \end{cases} \quad (1)$$

Here, λ and μ denote the common Lamé constants, \mathbf{u} the unknown displacement vector field, $\mathbf{e}(\mathbf{u})$ *Cauchy's infinitesimal strain tensor*, \mathbf{I} the identity matrix, \mathbf{n} the unit vector normal to the boundary Γ , \mathbf{f} the applied body forces, and \mathbf{g} the forces acting on Γ . Applying *the finite element method*, i.e. dividing the body Ω into quadrilateral elements and approximating the unknown continuous function \mathbf{u} by elementwise linear basis functions ϕ_i multiplied with unknown coefficients u_i , i.e. we set

$$\mathbf{u} = \sum_i u_i \phi_i, \quad (2)$$

yields the linear system

$$\mathbf{A}\mathbf{u} = \mathbf{f}. \quad (3)$$

This linear system of equations can be solved for the unknown displacements \mathbf{u} by using the numerical method of conjugate gradients.

To calculate the deformation of an anatomical structure due to given spatial correspondences between images, these correspondences must be integrated into the linear equation system. Therefore, we use the procedure described in Peckar *et al.* [4]: Given a value for the unknown u_j , this can be incorporated into the linear equation system by a subtraction of the product $u_j \mathbf{A}_j$, where \mathbf{A}_j denotes the j -th column of \mathbf{A} , from the righthand side vector \mathbf{f} , followed by a substitution of the given value into the j -th row of \mathbf{f} . Thereafter, the j -th row and column of \mathbf{A} are set to zero and the diagonal element A_{jj} to one. By repeating this procedure for a set of correspondences, to be given at the surface of an anatomical structure, a direct mapping from the undeformed into the deformed state of the anatomical structure results.

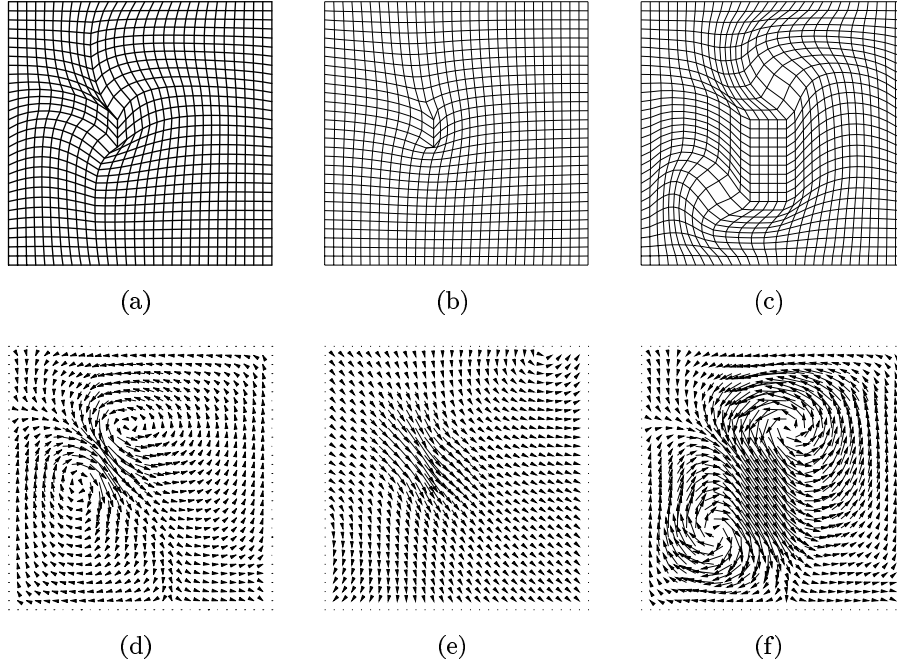


Fig. 1. Resulting grid deformation (top row) and displacement vector field (bottom row) due to four correspondences acting in the upper left part of the grid. In (a) and (b) homogeneous areas of type brain tissue and skull bone were assumed, respectively. As expected, the assumed skull material results in a much stiffer behaviour. By spatially varying the Lamé constants, we can combine different materials as shown in (c). Here, a (simulated bony) rectangle embedded in simulated brain tissue results in a pure translation of the rectangle.

3 Material Parameters

So far, our biomechanical model distinguishes two different materials only: brain tissue and skull bone. These materials can be incorporated into the linear equation system by spatially varying the values of the Lamé constants λ and μ according to the underlying anatomical structure. Since we drive the deformation by a set of given correspondences, which are always exactly fulfilled by the model, only the ratios of λ and μ are important for our biomechanical model. A comparison of the calculated ratios found by a comprehensive literature study revealed the interesting fact, that only a small number of different Lamé constant ratios for brain tissue and skull bone exists. Application of these ratios for some initial synthetic experiments showed only slight differences in the resulting deformations. Thus, we conclude that the mean values of the ratios serve as valid estimates for the material parameters. Figure 1 shows the resulting grid deformation and calculated displacement fields using these mean values.

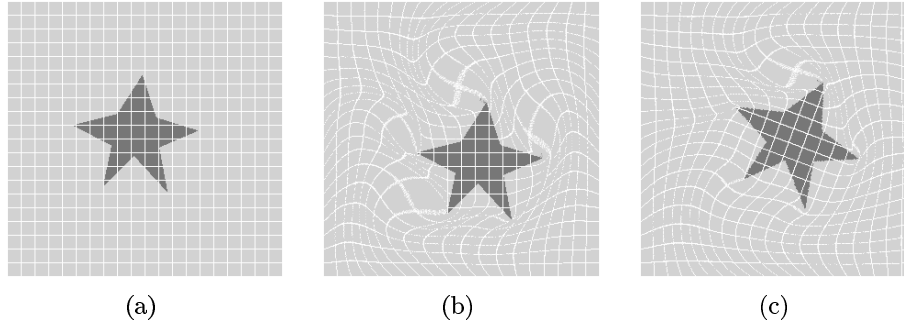


Fig. 2. Predicted translation of a rigid star (a) due to two given correspondences (b). In (c), only one correspondence was used, resulting in a translation and small rotation of the star according to the surrounding soft material.

4 Experiments

Our approach has been tested on 2D synthetic images as well as real tomographic datasets. The synthetic experiments comprised different types of movements of a rigid object (e.g., translation, rotation, scaling, and shearing) embedded into an otherwise elastic material. As shown in Figure 2 for the case of translation and rotation, our approach yields physically plausible results. Problems arise with objects rotated by an angle larger than 45° . A possible explanation may be that the linear elasticity assumption of small displacements is violated in the experiments with large rotation angles.

For the experiments with real data, we used 2D pre- and postoperative MR images which were routinely acquired in conjunction with the planning and verification of a tumor resection. First, the corresponding tumor outlines were manually determined by a medical expert in both images, see Figures 3(a) and (b). Thereafter, a snake algorithm has been applied to determine the correspondences for these outlines, which then have been used as input for our model to match the pre- with the postoperative image. Figure 4(a) shows a locally erroneous registration result assuming only homogeneous soft material for the whole image. In order to improve the registration result, especially in the vicinity of the ventricular system, different materials were incorporated by locally varying the Lamé constants according to the underlying anatomical structures. Therefore, the preoperative image was segmented with an interactive watershed algorithm [5] into four different regions as shown in Figure 3(c): combined skin/skull region (white), brain (dark grey), CSF (light grey), and surrounding air, i.e. image background (black). For brain and skull, the previously determined ratios were used, while CSF and air were roughly approximated as rigid and very soft materials, respectively. The result is shown in Figure 4(b). Here, a global movement of the head, forced by the given correspondences can be observed which leads to a surprisingly poor registration result. However, this global movement can be

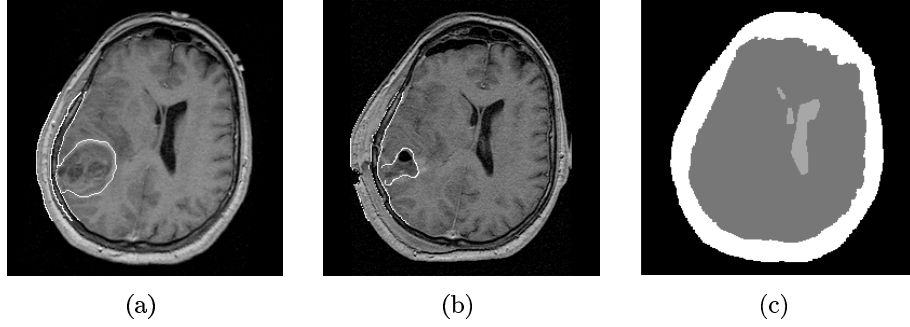


Fig. 3. Manually determined outlines in the pre- (a) and postoperative (b) image. In (c), the segmented regions using an interactive watershed algorithm are depicted.

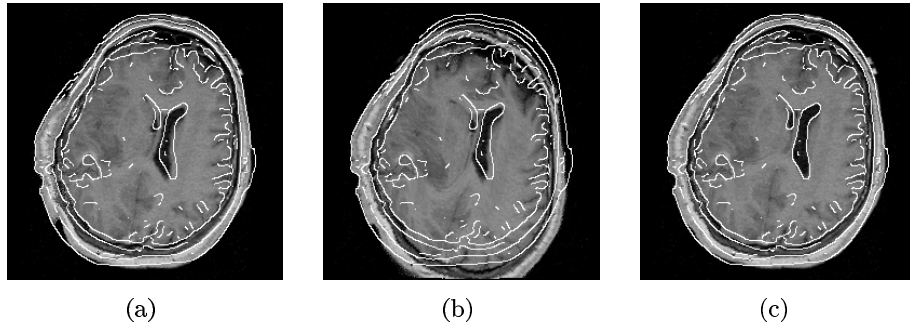


Fig. 4. In (a), the registration result assuming homogeneous soft material properties (with overlaid Canny edges of the original postoperative image) is depicted. For the result shown in (b), inhomogeneous material properties based on the segmentation given in Figure 3(c) are assumed. The global head shift can be easily suppressed by assuming an artificial rigid image background, resulting in an overall good registration result in (c).

easily suppressed by assuming a rigid image background, i.e. by assigning the Lamé constant values of a rigid body to the image background, see Figure 4(c).

5 Summary and Conclusion

We proposed a biomechanical model of the human head based on linear elasticity theory to predict brain deformations due to surgical interventions. The model is driven by a set of given correspondences and incorporates different material properties. By carrying out experiments using synthetic as well as real medical images, it turns out that the approach leads to physically plausible deformation results. We expect that the incorporation of other constitutive equations leads to further improvements of the prediction results.

6 Acknowledgement

Support of Philips Research Laboratories Hamburg, project IMAGINE (IMage- and Atlas-Guided Interventions in NEurosurgery), is gratefully acknowledged.

References

1. R. D. Bucholz, D. D. Yeh, J. Trobaugh, L. L. McDurmont, C. Sturm, C. Baumann, J. M. Henderson, A. Levy, and P. Kessman. The Correction of Stereotactic Inaccuracy Caused by Brain Shift Using an Intraoperative Ultrasound Device. In *Computer Vision, Virtual Reality and Robotics in Medicine and Medical Robotics and Computer-Assisted Surgery (CVRMed-MRCAS'97)*, Grenoble, France. J. Trocaz, E. Grimson, and R. Mösges (editors), *Lecture Notes in Computer Science*, vol 1205, pp. 459–466, Springer Verlag, 1997.
2. P. J. Edwards, D. L. G. Hill, J. A. Little, and D. J. Hawkes. Deformation for Image Guided Interventions Using a Three Component Tissue Model. In *Information Processing in Medical Imaging (IPMI'97)*, Poultney, USA. J. Duncan, G. Gindi (editors), *Lecture Notes in Computer Science*, vol 1230, pp. 218–231, Springer Verlag, 1997.
3. J. A. Little, D. L. Hill, and D. J. Hawkes. Deformations Incorporating Rigid Structures. *Computer Vision and Image Understanding*, 6(2), pp. 223–232, 1997.
4. W. Peckar, C. Schnörr, K. Rohr, and H. S. Stiehl. Two-Step Parameter-Free Elastic Image Registration with Prescribed Point Displacements. *9th Int. Conf. on Image Analysis and Processing (ICIAP'97)*, Florence, Italy. A. Del Bimbo (editor), *Lecture Notes in Computer Science*, vol 1310, pp. 527–534, Springer Verlag, 1997.
5. S. Tieck, S. Gerloff, and H. S. Stiehl. Interactive graph-based editing of watershed-segmented 2D-images. In *Workshop on Interactive Segmentation of Medical Images (ISMI'98)*, Amsterdam, Netherlands, September 1998 (Electronic Extended Abstract: <http://carol.wins.ura.nl/~silvia/workshop>).